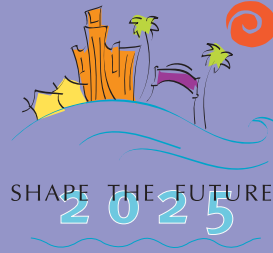




City of **Santa Monica**



October 2006

The New Look of Shape the Future

As the Land Use and Circulation Element (LUCE) update project enters its second year, an effort is underway to update and improve the initiative's communication channels. This undertaking has recently included the monthly newsletter, and will soon address the project website, whose complete redesign and enhanced feature set is nearing completion.

Shape the Future's Extreme Makeover

Scheduled for an October launch, the website of the Santa Monica Land Use Element Update will feature a freshly updated look and increased user functionality to make your online experience more informative, interesting and meaningful. The website is in its final stages of re-development and seeks to enhance communication between the community and the City, and to facilitate user navigation through the various libraries, galleries, and archives of project data. Among the many changes you'll see is a search feature that will make locating your favorite subjects a snap, or you can use the site index for a detailed inventory of documents, web pages, links, and work products. At a later date, the web site will also include an interactive

discussion forum, where users can post comments or suggestions on a range of topics from affordable housing and new growth to historic preservation and the environment. Staff is excited to use the new website as a tool to improve the dialogue surrounding the Land Use and Circulation Element update. Please visit us soon at shapethefuture2025.net!

Sustainable Santa Monica Sustainability a Hot Topic for the LUCE

Twelve years ago Santa Monica launched the Sustainable City Plan (SCP), a visionary plan for the community's future. The City is now an internationally recognized and award winning sustainability leader, whose success in realizing the lofty SCP goals were recently recognized in the Sustainable City Report Card. Among the indicators used to measure sustainability such as Conservation, Human Dignity

and Public Health, the City also scored high in the Community Education and Civic Participation category. The A-grade reflected efforts in public participation that generated an "active community dialogue" around the LUCE project. Voter participation and the level of community events and neighborhood meetings that spread awareness of community issues also helped to raise the grade from the previous year.

Santa Monica Celebrates National Community Planning Month!

This October marks the celebration of National Community Planning Month, an opportunity to celebrate Santa Monica, and the planning profession, which strives to make this city a desirable place to live, work, and play. This year's theme of Making Great Communities Through Planning celebrates how communities are created. The theme is sponsored by the American Planning Association (APA) in an

effort to recognize the positive impacts that planning has on our communities. The

APA is the national association for planners that advocates for good planning practices in our communities. As many of our cities continue to change and grow, planning plays an important role in ensuring that new developments

are designed and built in harmony with the existing surroundings. Planners must carefully balance the needs and desires of residents against the challenges presented by growth and change. We can look to planning as a guiding source for managing this change, while maintaining the character and quality of our community. To learn more about National Community Planning Month, visit www.planning.org/ncpm



Want More Info? Contact Us
City of Santa Monica
PCD Planning Division
1685 Main Street, Room 212
Santa Monica, CA 90401
(310) 458-8341
shapethefuture2025@smgov.net
<http://motion.santa-monica.org>