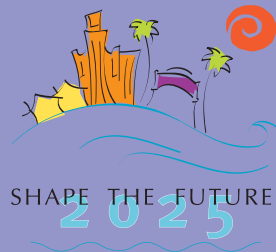




City of **Santa Monica**



November 2006

National Community Planning Month Yields Insights and Inspirations for LUCE Project



National Community Planning Month recently provided the opportunity to celebrate how new communities are created even while many others continue to change and grow. As part of the theme of "Making Great Communities Through Planning," several important symposiums and conferences were held in the Los Angeles area about how planning plays an important role in our Cities and in our lives.

Livable Boulevards Symposium Hits the Streets of LA

On October 6, the **Westside Cities** held a Livable Boulevards symposium at the Pacific Design Center in West Hollywood, which considered practical solutions for reinventing segments of Westside boulevards as attractive mixed-use neighborhood centers, even as these streets maintain their local and regional transportation functions. Keynote speaker Gordon Price, a former Vancouver Council member, demonstrated Vancouver's success at creating a livable, walkable downtown through balancing high density residential development with extensive open space and maintaining the traditional, lively character of the commercial streets. Central to Vancouver's strategy was providing multiple transportation choices,

including walking, biking, automobile, transit, and buses. Price was followed by experts on economics, transportation, building design and commercial development. The White paper and a "toolkit," a collection of recently published articles will soon be posted at the Westside Cities website: westsidecities.org.



California Chapter
AMERICAN PLANNING ASSOCIATION

CCAPA Conference Spotlights Growth

Recently in Anaheim, the annual conference of the California Chapter of the American Planning Association (CCAPA), "Reinventing Suburbia," focused on dissecting the image of suburbia that has evolved to include higher densities, more affordable housing, and more mixed use, among other things. Nearly one hundred sessions explored some of California's most

pressing land planning issues, and topics included affordable housing, mixed use development, sustainability, and infill design. The annual conference gave the State's planning professionals, including PCD staff, an opportunity to share best practices and explore approaches to improve our cities and counties.

Sustainable Indicators Illuminate LUCE



In an October Planning Commission meeting, Dean Kubani, Environmental Programs Manager, discussed the use of performance indicators in **Santa Monica's Sustainable City Plan (SCP)** and the potential application of indicators in the LUCE effort. Mr. Kubani expressed how the LUCE could benefit from the lessons learned in the SCP process by including a set of indicators that connect with the LUCE goals in meaningful and measurable ways. After several years of ongoing evaluation, Environmental Programs staff now has adequate technology and software to regularly

update its **66 indicators**, and the annual monitoring and "Report Card" has become a manageable project. It is anticipated that indicators will be used in the LUCE project to measure achievement in the stated goal areas and future plan performance.

LUCE Website Launches Off



The new **website** of the Santa Monica Land Use Element Update launched in October with a fresh look and increased user functionality. Shapethefuture2025.com was redesigned to re-energize the project as it enters its second year. New features such as a search function, a project library, photo gallery, and discussion forum were added to provide a more meaningful and satisfying online experience. Please visit us at shapethefuture2025.com

Want More Info? Contact Us
City of Santa Monica
PCD Planning Division
1685 Main Street, Room 212
Santa Monica, CA 90401
(310) 458-8341
shapethefuture2025@smgov.net
<http://motion.santa-monica.org>